



Vantage® Mobile Services

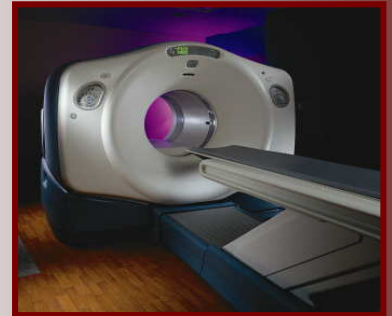
Providing Quality MRI, Lithotripsy, PET/CT, and other
Diagnostic Mobile Services for Facilities and Organizations

PET/CT Services

The Ad-Vantage Plus Program

PET/CT Services include the added Value of . . .

- GE DST 16 PETCT
- Radiation Treatment Planning Capabilities
- Cardiac Perfusion Imaging Available
- Screening and Scheduling Service Includes:
 - Screening of Requests
 - Scheduling of Patients
 - Obtaining Pre-Authorization
 - Medical Screening and Confirmation
- Comprehensive Staffing Model:
 - Certified Nuclear Medicine Technologist; *and*
 - Registered Nurse
- Radiopharmaceutical (FDG) Included
- No Charge for Cancelled Patients or Unused FDG
- Ongoing Individual *Physician to Physician* Consultation/Education
- No Minimum Patient Requirement
- Collaborative Development and Implementation of an Educational Strategy Specific to Your Medical Staff and Community
- Quality Assurance Interpretation Over-read Service Included
- Image Viewing Workstation Located Within Your Facility
- All Supplies for the PET/CT Service Included
- Vantage® Held RAM Licensure
- Vantage® Employed RSO



The Vantage® Difference
"Sets Us Apart"

- ✓ Comprehensive Patient Focus
- ✓ Expert Staff
- ✓ Dedicated PET/CT Scheduling Center
- ✓ Technical Excellence
- ✓ Exceeding Needs and Expectations
- ✓ Continuum of Education

For more information please contact:

Carrie Pappal, RN, BSN ♦ Director of Mobile Services
Phone: 412-309-0044 ♦ carriep@vantagehealthcare.com

www.vantagehealthcare.com