

PET/CT Services ***the Ad-Vantage Plus Program***

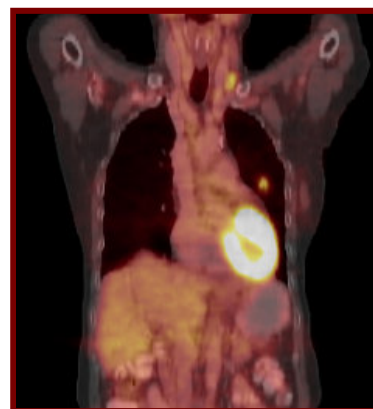
PET/CT Services include the Added Value of . . .

- **GE DST 16 PETCT**
- **Radiation Treatment Planning Capabilities**
- **Cardiac Perfusion Imaging Available**
- **Screening and Scheduling Service Includes:**
 - **Screening of Requests**
 - **Scheduling of Patients**
 - **Obtaining Pre-Authorization**
 - **Medical Screening and Confirmation**
- **Comprehensive Staffing Model:**
 - **Certified Nuclear Medicine Technologist; and**
 - **Registered Nurse**
- **Radiopharmaceutical (FDG) Included**
- **No Charge for Cancelled Patients or Unused FDG**
- **Ongoing Individual *Physician to Physician* Consultation/Education**
- **No Minimum Patient Requirement**
- **Collaborative Development and Implementation of an Educational Strategy Specific to Your Medical Staff and Community**
- **Quality Assurance Interpretation Over-read Service Included**
- **Image Viewing Workstation Located Within Your Facility**
- **All Supplies for the PET/CT Service Included**
- **Vantage® Held RAM Licensure**
- **Vantage® Employed RSO**



**The Vantage® Difference
“Sets Us Apart”**

- ✓ **Comprehensive Patient Focus**
- ✓ **Expert Staff**
- ✓ **Dedicated PET/CT Scheduling Center**
- ✓ **Technical Excellence**
- ✓ **Exceeding Needs and Expectations**
- ✓ **Continuum of Education**



Vantage® Mobile Services
Providing Quality MRI, Lithotripsy, PET/CT, and other
Diagnostic Mobile Services for Facilities and Organizations

(866) 251-0710

www.vantagehealthcare.com